



Model PSC LC500G-R10

The PSC LC500G-R10 units are intended for OEM use in laboratory, hospital or consumer product applications, establishing a breakthrough price/performance value for compression load cells. Dimensions are identical in different ranges, such as 500g、1kg、2kg、5kg. The sensor can be interchanged for another of a different range without mechanical modifications. This new, low-cost technology enables force sensing in a whole new class of "smart" consumer and medical products.

Features

- Small size Φ 10mm
- Low Noise
- Robust: High Overload
- High Reliability
- Low Deflection
- Fast

Applications

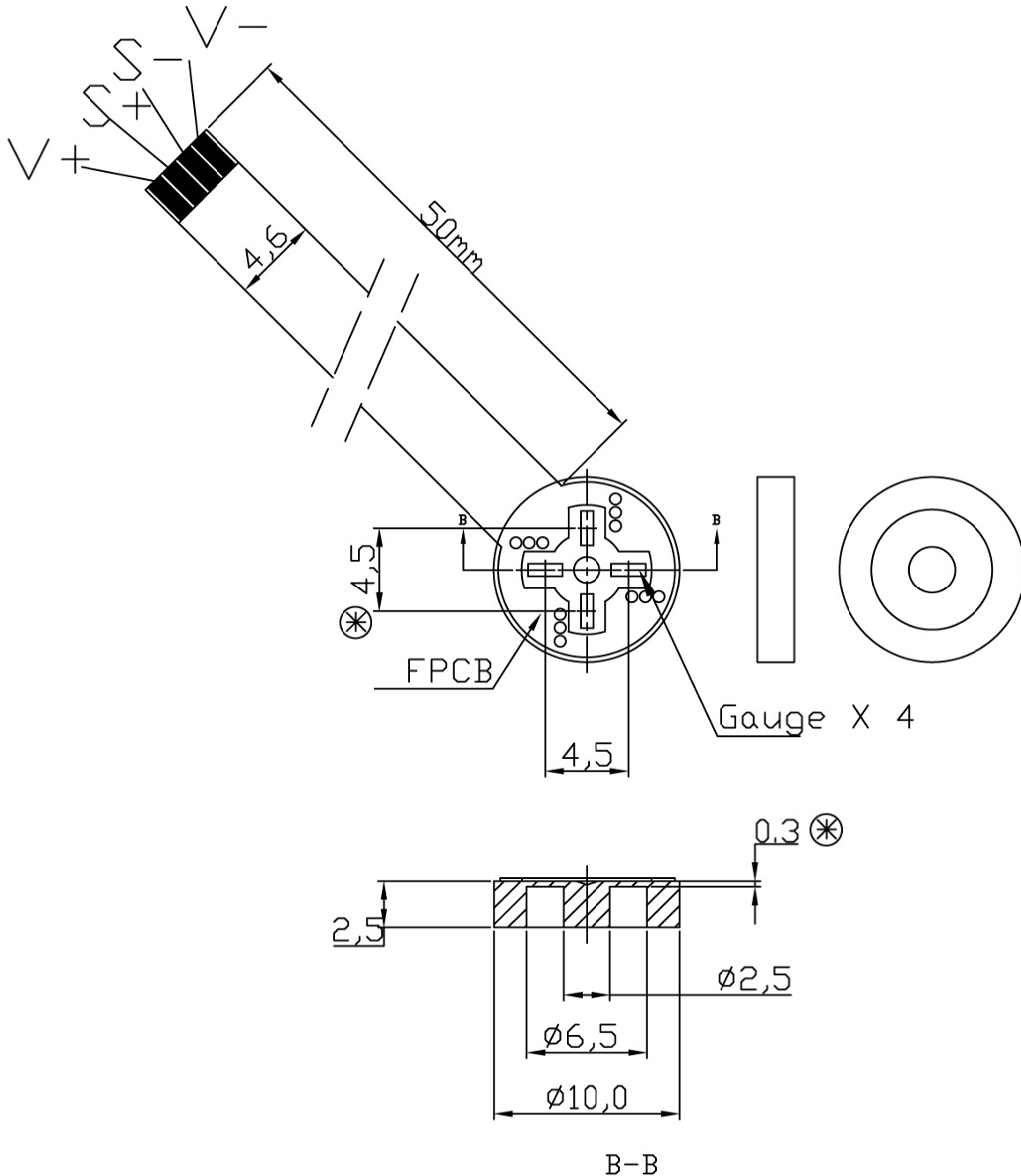
- Medical device
- Physical Therapy Devices
- Hand Tool Forces
- Chiropractic and Exercise Equipment and Vending systems
- Appliance Payload Monitoring: Dryers, Water Weight, Extraction Efficiency

Technical parameter		
1	Capacity	500G
2	Sensitivity	15±5 mv/v
3	Zero offset	-10mv~+10mv
4	Creep	0.3%F.S(3min)
5	Zero drift	0.3%F.S(3min)
6	Repeatability	0.3%F.S
7	Non-linearity	0.5%F.S
8	Hysteresis error	0.3%F.S
9	Zero TC(temperature coefficient)	3.0% F.S/10°C
10	Span TC(temperature coefficient)	1.5% F.S/10°C
11	Operating temperature	-10°C~+50°C
12	Insulation resistance	> 50Mohm/250VDC
13	Supply Voltage	3~15VDC
14	Safe overload	150%F.S
15	Storage temperature	-10°C~+60°C



Model PSC-LC500G-R10

Structure reference(Unit: [mm])



Note:

UNLESS OTHERWISE SPECIFIED
ALL DIMENSIONS IN MM
TOLERANCES
DECIMALS ANGULAR
.X FOR ±0.1 ±0.5°
.XX FOR ±0.05